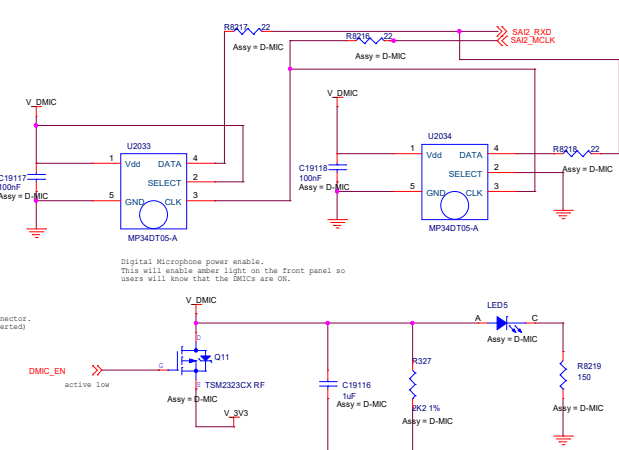
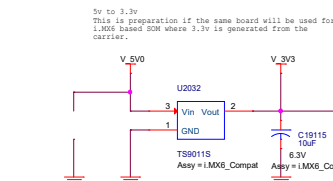
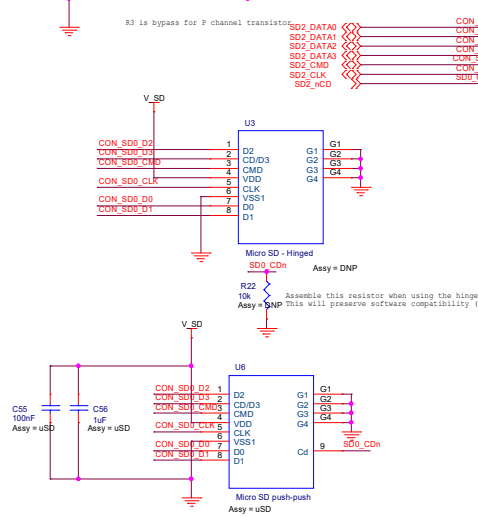
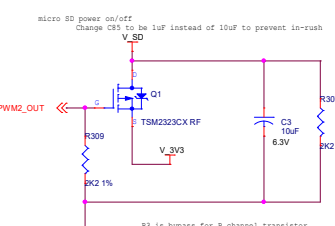
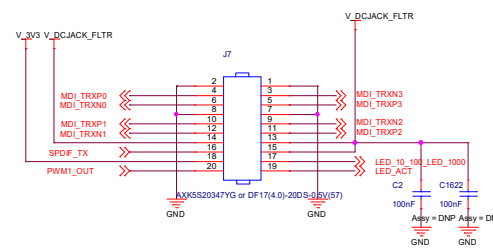
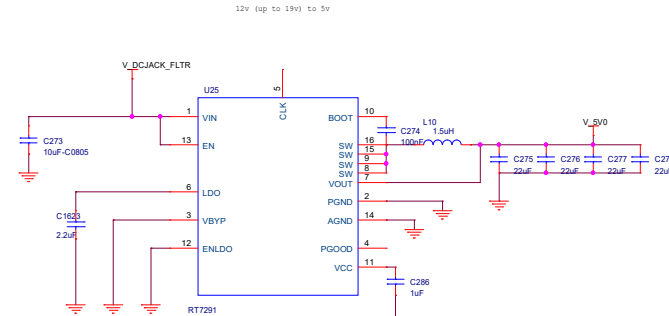
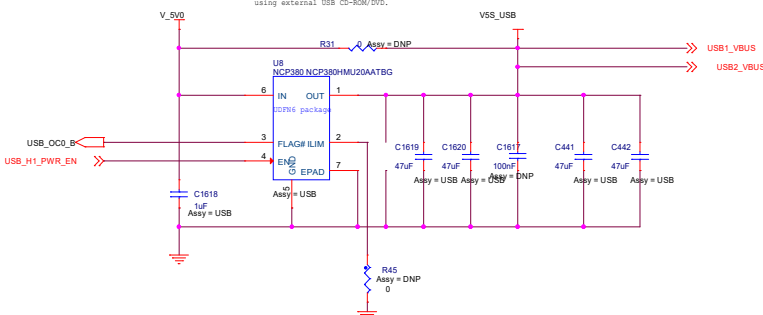
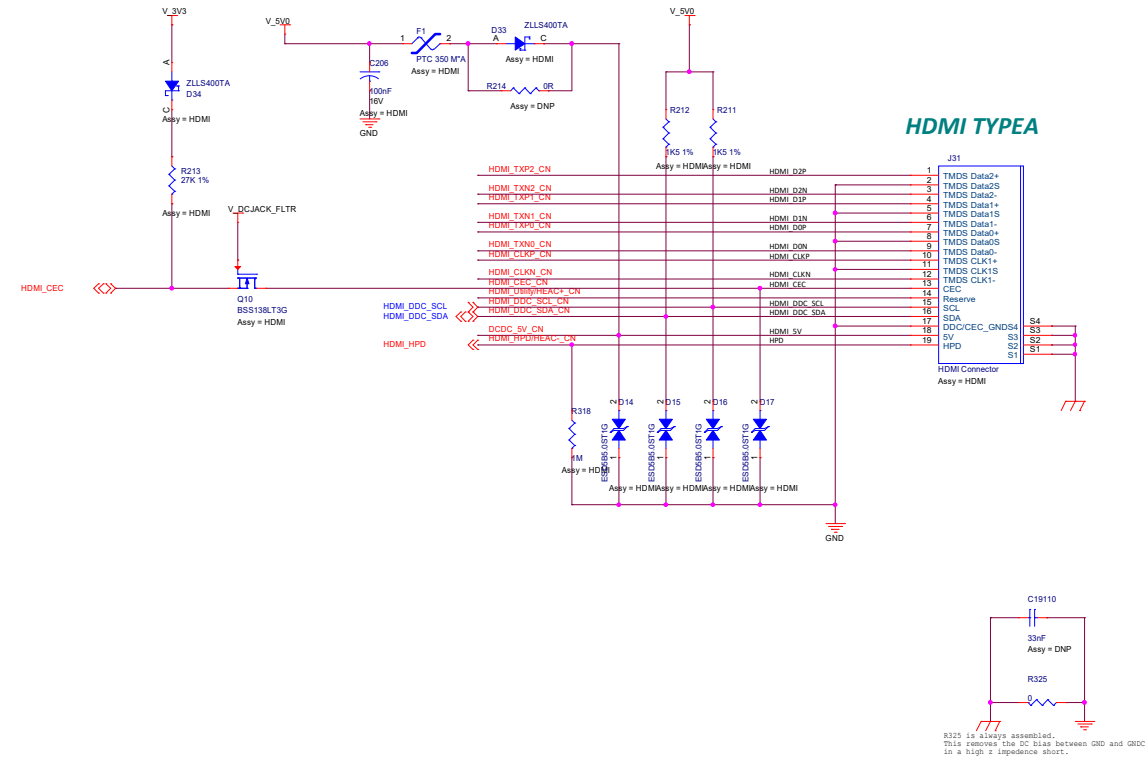
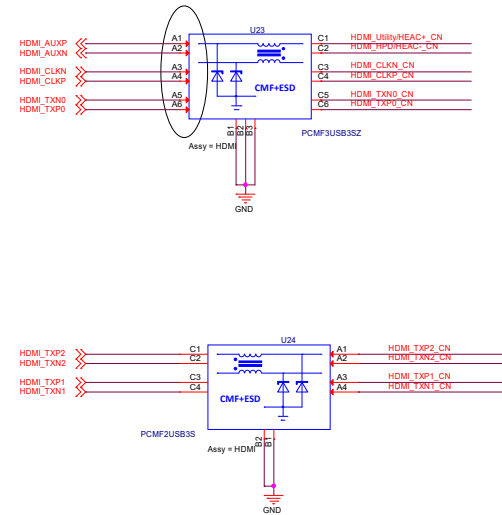


Notice the addition of more capacitance on the output C461 and C442. This comes to assist when using external mechanical devices. The issue that was observed is high swing on VBUS when using external USB CD-ROM/DVD.



Title			
CuBox-Pulse lower			
Size A1	Document Number <Doc>		Rev 1.1
Date:	Thursday, July 23, 2020	Sheet	1 of 2

HDMI data EMI/ESD



FTDI based micro USB to serial console

